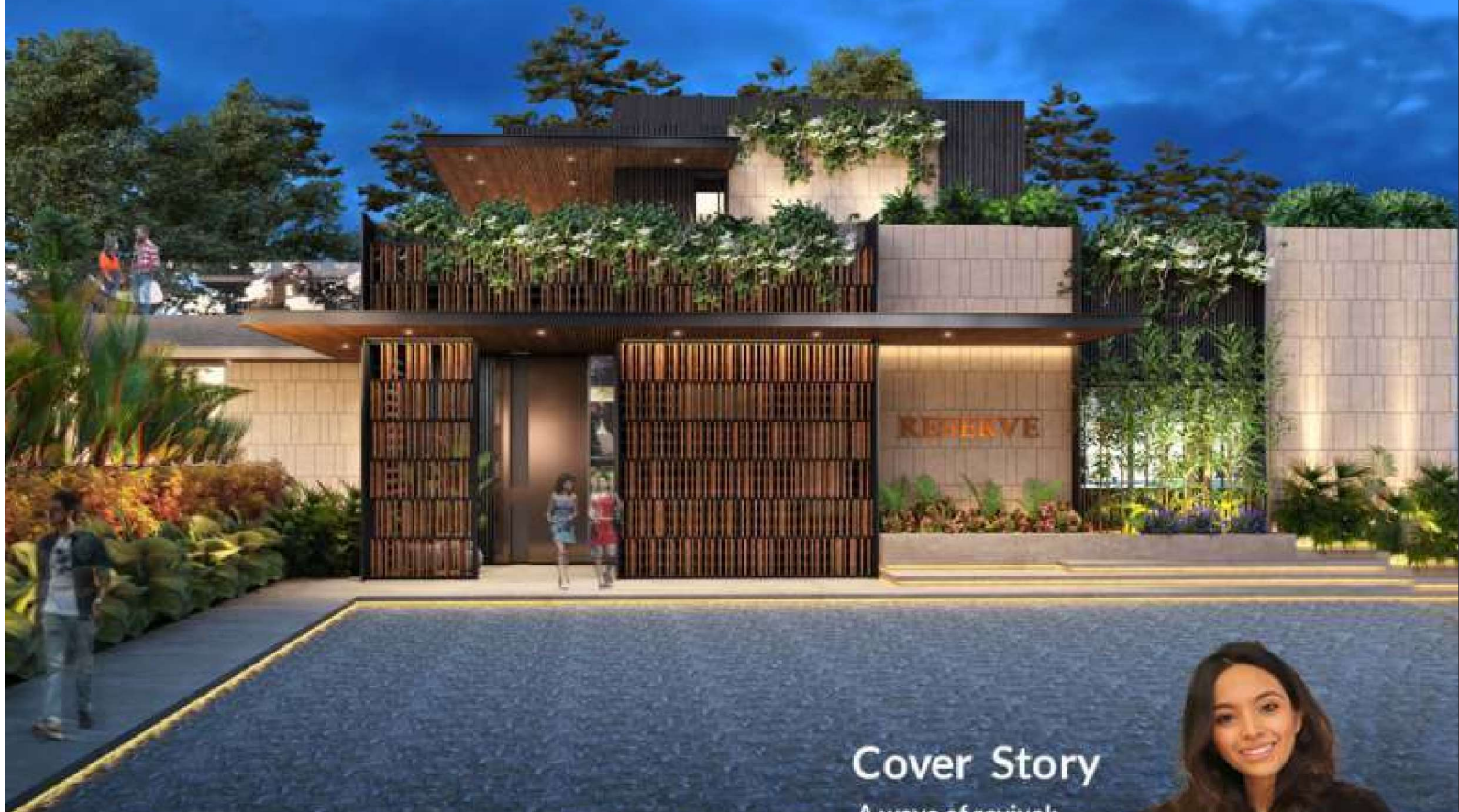
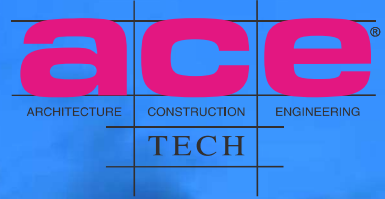


Architectural & Builders Magazine

Vol-11 Issue-02 June-2023
www.abmagazine.in



Media Partner



Cover Story

A wave of revival;
uncommercializing luxury.
Alibaug's Residential-scape
from the lens of Riya Patel,
Co-founder Kalagate Collective



Blitz Media

PHILIPS

mozart
THE TILE COMPOSER

CITYLIFT
Performance in Motion

ASSA ABLOY

SAINT-GOBAIN

FLAIS
GRANITO

ORBIT
THE POWER PEOPLE
WIRES & CABLES

Vertical Logistic Park at Kulana, Haryana



Sneha Gurjar
CEM Engineers

Location : Haryana

Area : 6,50,000 Sq. ft.

Design Team : Sneha Gurjar,
Krishna Anand, Sunil Gupta

Photography : Jeetin Sharma

The infrastructure that keeps e-commerce working smoothly

With the significant rise in digital literacy and access to high-speed internet and smartphones, the e-commerce industry has dynamically changed how we shop. As a response, the architecture of storage warehouses has evolved in size and technology to accommodate the rapid increase in the shipping of products. A prime example of this is the warehouse development at Kulana, Haryana, which caters to the storage and distribution needs of the thriving e-commerce industry in NCR.



Strategically located along key travel routes, the site for the warehouse is well-connected to the NH-352 by peripheral roads and is in close proximity to a railway line. It is spread over an extensive stretch of 25 acres and encompasses two parcels of land, housing three warehouse structures. As a Grade-A structure, it follows standardised design norms set by the Warehousing Development and Regulatory Authority (WDRA) of India. It necessitates a minimum internal height of 11 metres with spacious column-free enclosures. This is structurally executed by adopting the Pre-Engineered Building (PEB) structure with 25 metres-wide clear-span steel trusses. In addition, pre-coated, insulated galvalume sheets are used as roofing material to ensure structural durability. A rigorously minimal and function-oriented structure, the design of the warehouse caters to optimal movement to foster an efficient chain of activities.

Sustainable measures have been implemented in the project right from the conceptual stage. An excellent example of this is the integration of cowl and skylight, which brings in natural light and fresh air in the warehouse, enabling 6-8 air changes per hour. Furthermore, provisions have been made for a stormwater drain system with a return period of 50 years, along with measures for rainwater harvesting.

